

A hand holding a globe with a network of people icons. The background is a blue-tinted image of a hand holding a globe, overlaid with a network of white lines and circular icons containing human figures. The globe is centered in the hand, and the network extends outwards, connecting various points.

# Understanding REACH

BYK's only representative for the EU

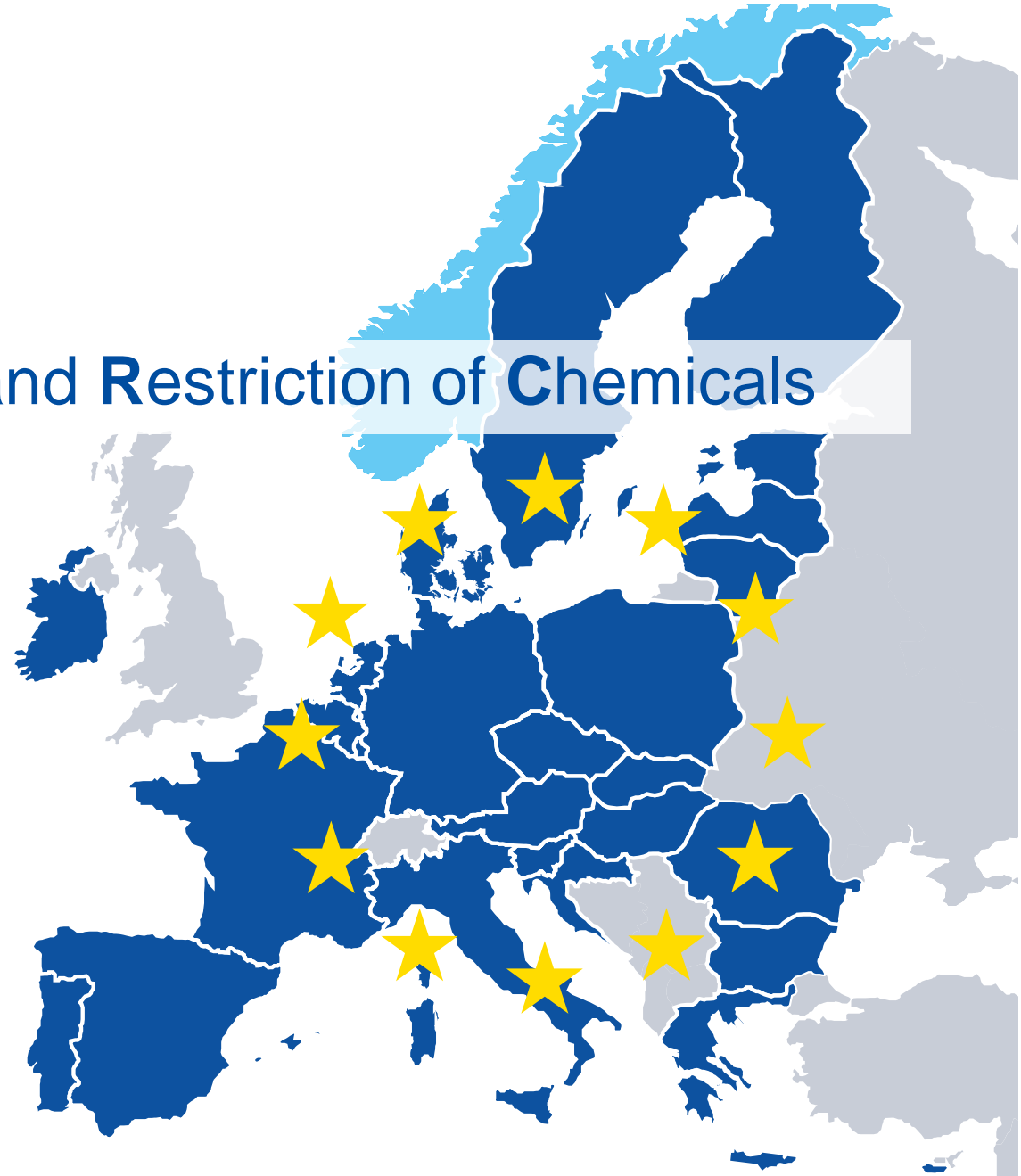
**Information for non EU companies**  
Place, Date, Forename Surname+

# Introduction

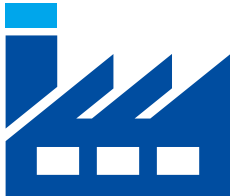
## REACH = Registration, Evaluation, Authorisation and Restriction of Chemicals

REACH is a regulation of the entire **European Economic Area (EEA)**, which includes the EU Member (27) States, Iceland, Liechtenstein and Norway.

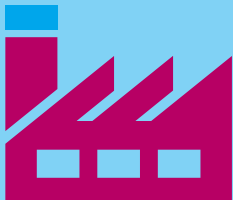
REACH has been adopted to improve the **protection of human health** and **the environment** from the risks that can be posed by chemicals, while enhancing the **competitiveness** of the EU chemicals industry.



# Roles within the Supply Chain



Non EU Company



### Manufacturer

is based in the EEA and produces or extracts a chemical substance.



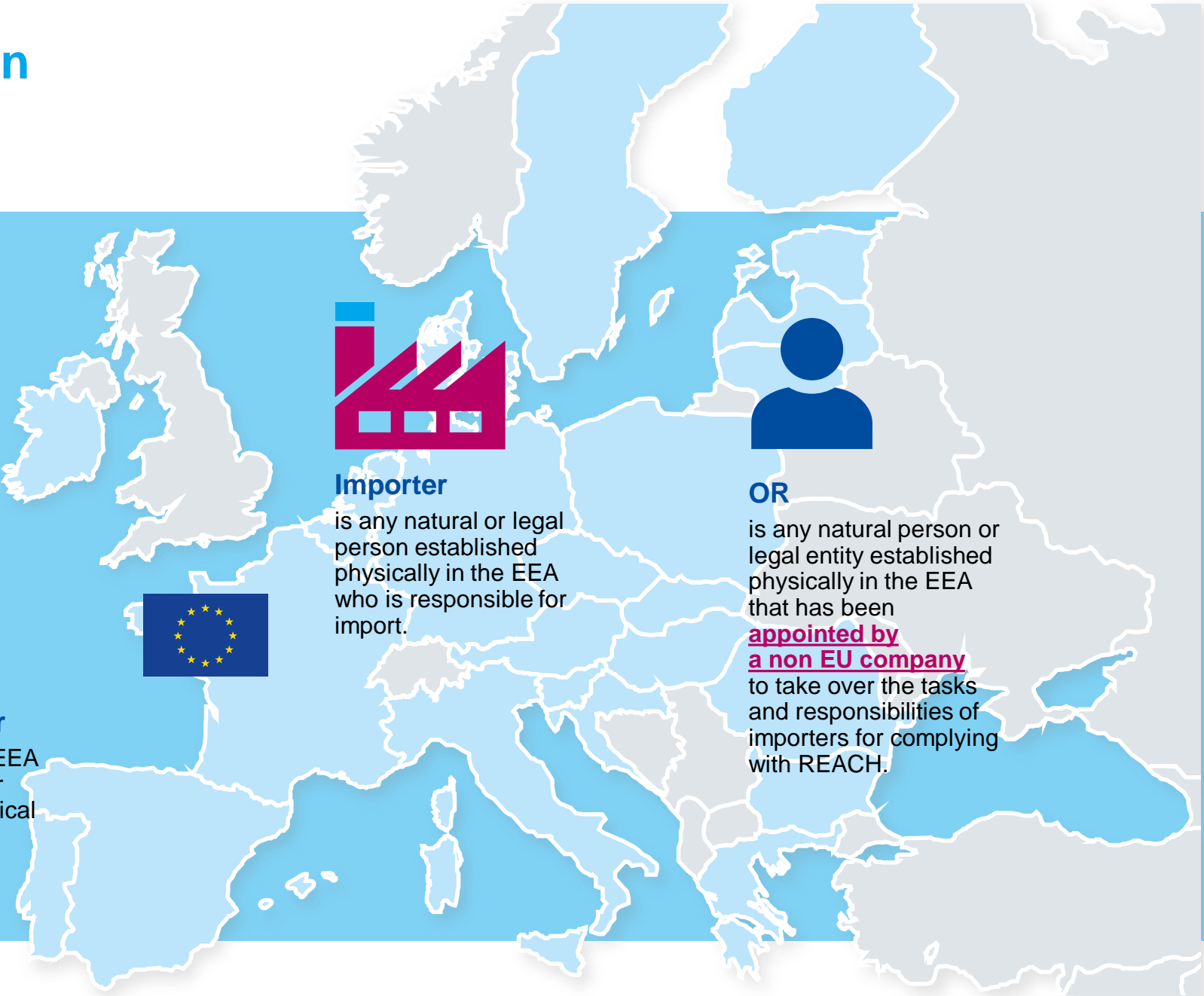
### Importer

is any natural or legal person established physically in the EEA who is responsible for import.



OR

is any natural person or legal entity established physically in the EEA that has been appointed by a non EU company to take over the tasks and responsibilities of importers for complying with REACH.



# Obligations under REACH – In General



Register substances that are manufactured or imported  $\geq 1$  tonne per year.



Ensure that a product is classified, labelled and packaged in accordance with the CLP (Classification, Labelling and Packaging), based on EU GHS Regulation.



Comply with notification and authorization requirements (if applicable).



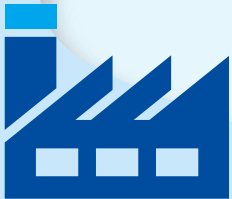
Communicate the relevant information on safe use of chemicals.

## Important:

Obligations under REACH apply only to legal entities established in the EEA.

# Obligations under REACH – Rolebased

## Non EU Company

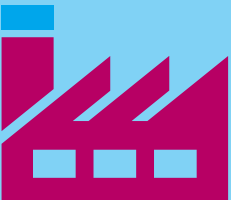


### No obligation

(but your EU customer does and thus, you need to support if your export will continue).

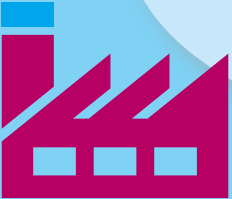


## Manufacturer



Register substances that are manufactured at or above one tonne per year.

## Importer



Register each individual substance imported at or above one tonne per year (on its own or in a mixture/article).

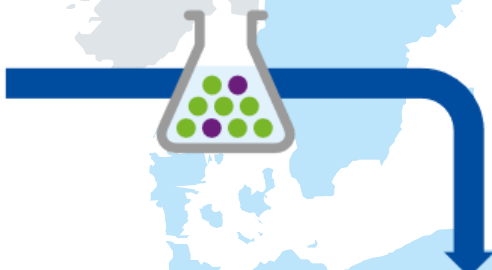
OR



Register each individual substance imported at or above one tonne per year (on its own or in a mixture/article) and comply with additional requirements specific to the role as an only representative.

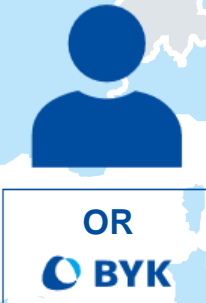
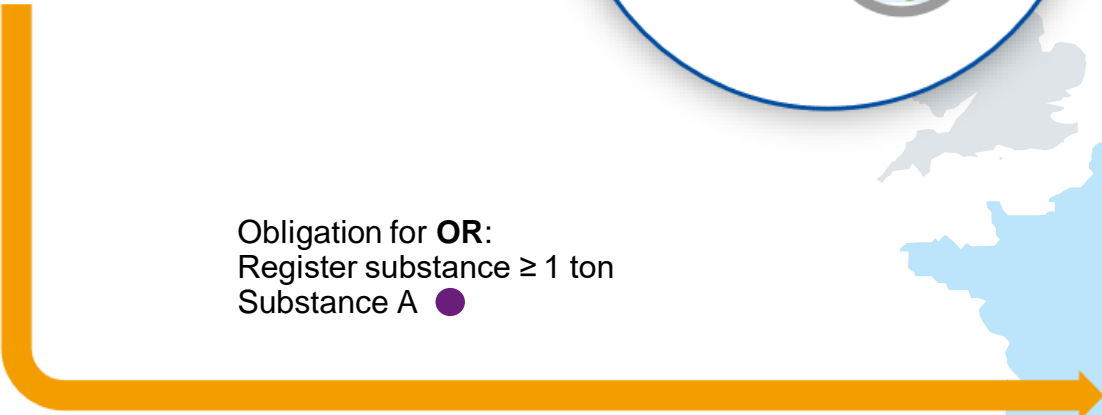
# Import Scenario for Non-EU Manufactured Substances and Mixtures

Non EU Company



Obligation for EU based Company: Register substance  $\geq 1$  ton Substance B ●

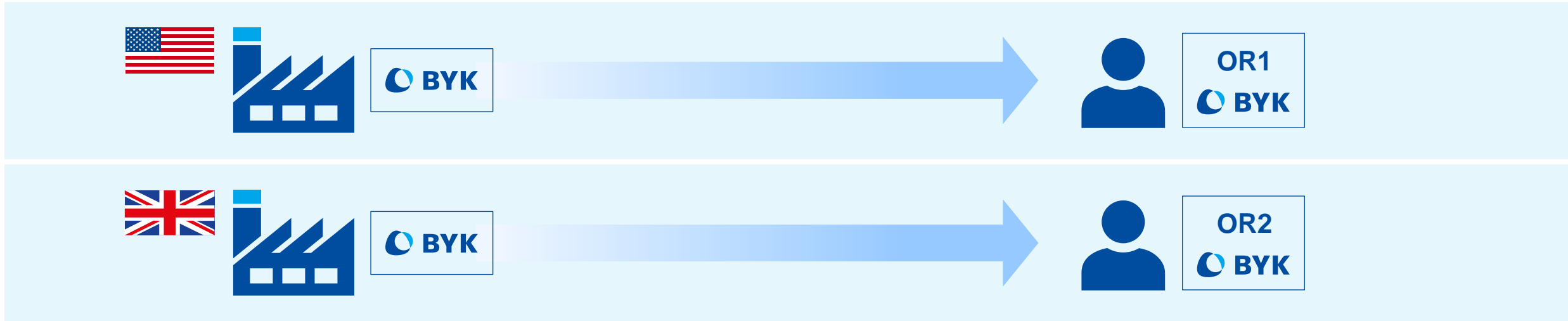
Obligation for OR: Register substance  $\geq 1$  ton Substance A ●



- Goods flow
- Information flow
- Registration



# BYK's OR Services in the EU



BYK USA Inc. and BYK Additives Ltd.  
have appointed BYK-Chemie GmbH to act as its OR.

Please contact BYK at [www.byk.com/en/contact](http://www.byk.com/en/contact) to obtain the OR request form. Once the request is received, the OR agreement letter will be provided. The following information is required:

- Company name
- Address
- Contact person
- Contact person email
- EU importer name und address
- BYK additive name
- Volume imported into EU for next three years

**>** Take the advantage of  
BYK's OR Service

Thank you  
for your attention.